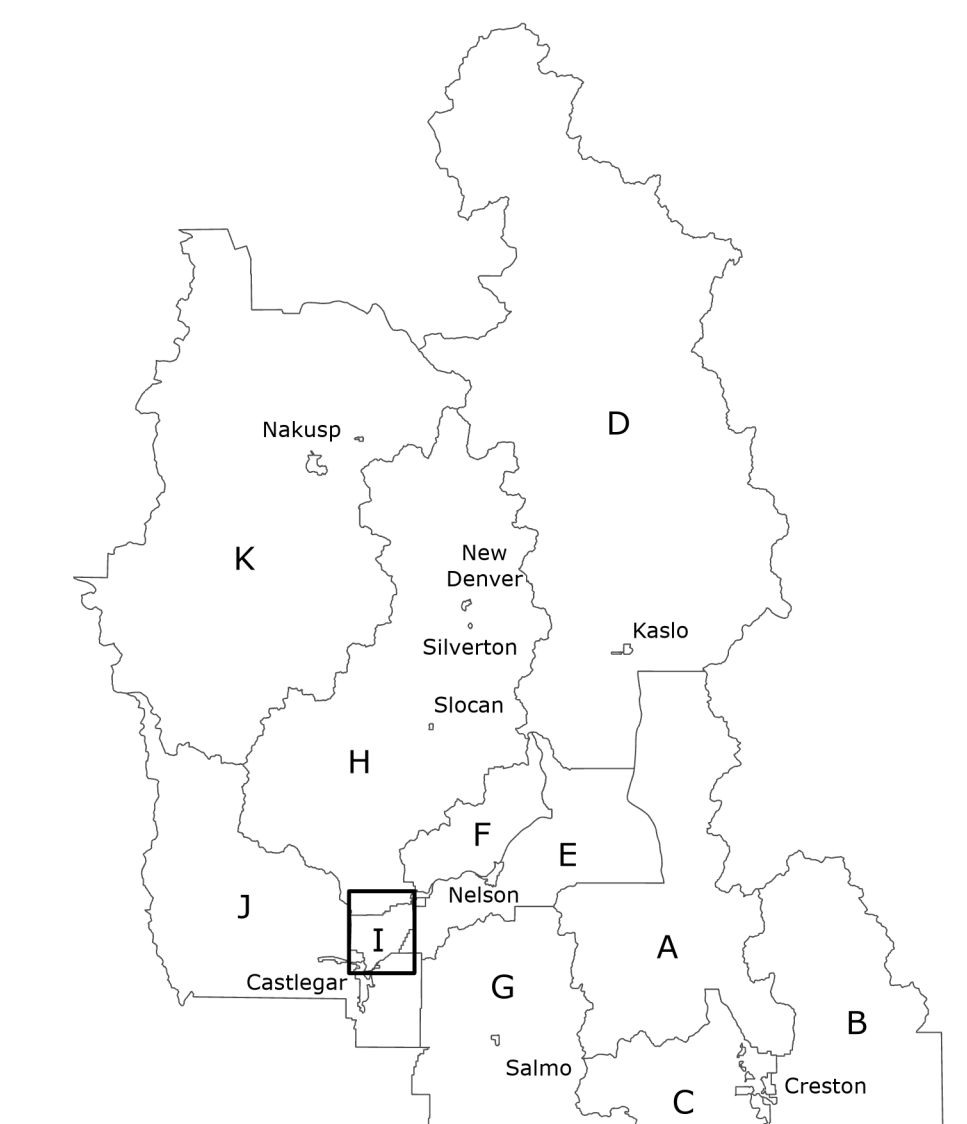
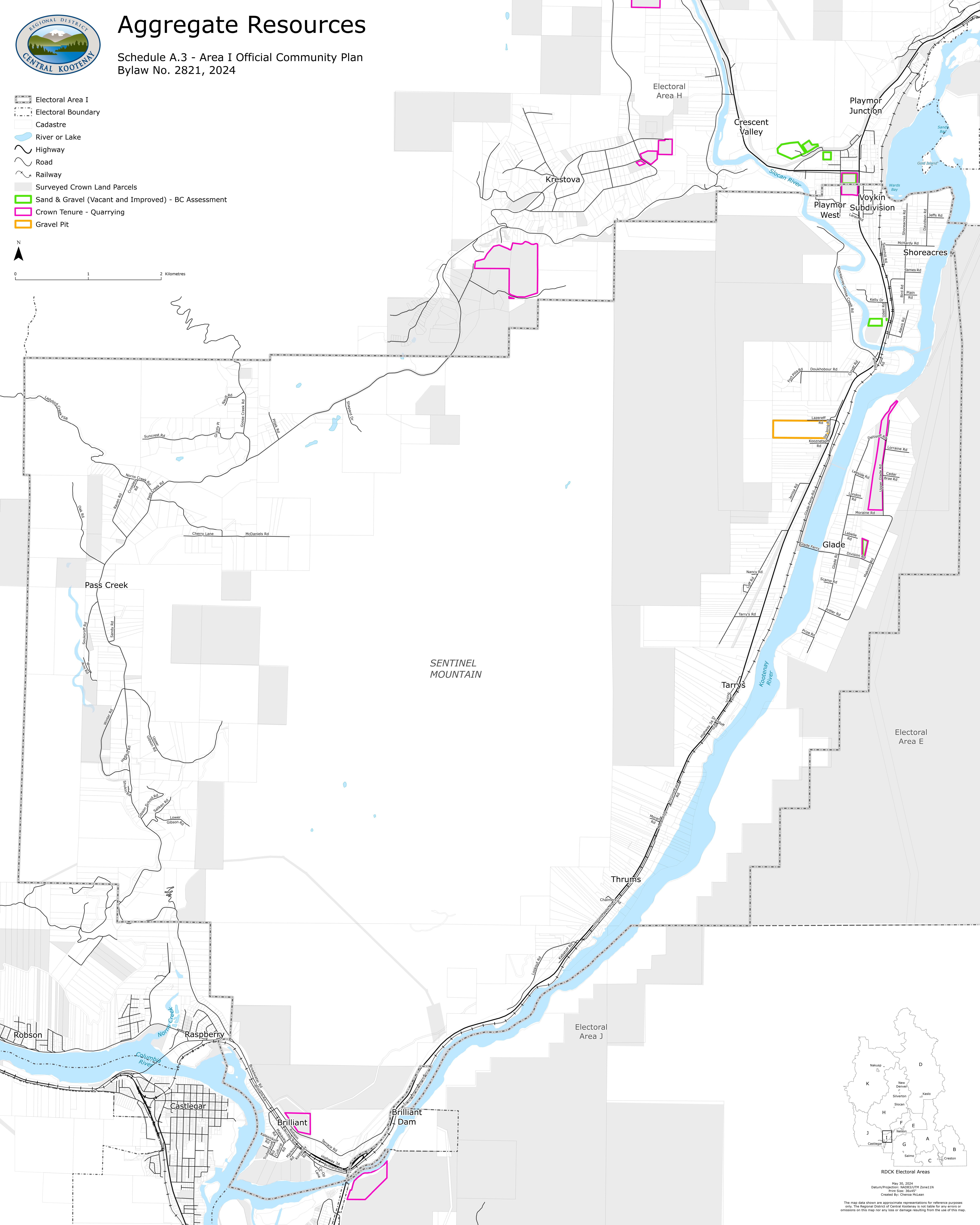
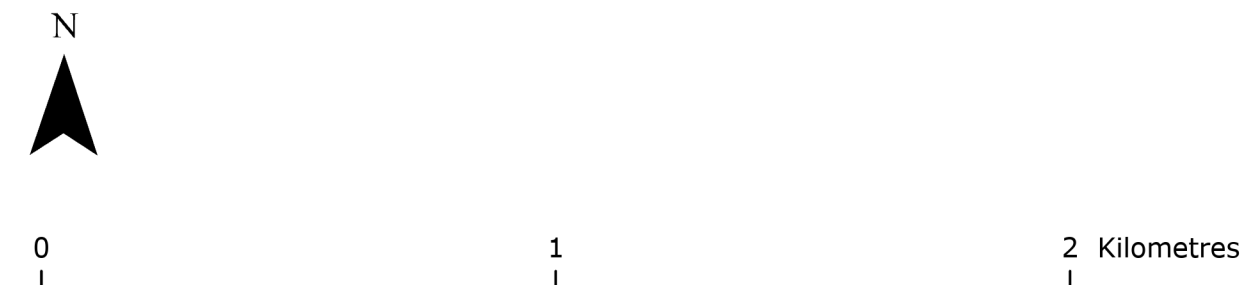




# Aggregate Resources

Schedule A.3 - Area I Official Community Plan  
Bylaw No. 2821, 2024

- Electoral Area I
- Electoral Boundary
- Cadastre
- River or Lake
- Highway
- Road
- Railway
- Surveyed Crown Land Parcels
- Sand & Gravel (Vacant and Improved) - BC Assessment
- Crown Tenure - Quarrying
- Gravel Pit



RDCK Electoral Areas

May 30, 2024  
Datum/Projection: NAD83/UTM Zone11N  
Units: Spheroid  
Created By: Chelsea McLean

The map data shown are approximate representations for reference purposes only. The Regional District of Central Kootenay is not liable for any errors or omissions on this map nor any loss or damage resulting from the use of this map.